



孕龍科技股份有限公司
ZeroPlus Technology Co., Ltd.

SPECIFICATION

MODEL: B09015-LAP-DALI Interface-M

PART NO: _____

VERSION: V1.01

Approver		Check	Design
GM	PM		

Customer Confirm

*Please fax the file to Zeroplus Technology after signing.

2F, NO.123, Jian Ba Rd,
Chung Ho City, Taipei Hsian, R.O.C.

Tel:+886-2-66202225
Fax:+886-2-22234362



Content

1. Software Download.....	3
2. Software Installation	6
3. Software Register.....	10
4. User Interface.....	13
5. Operating Instructions.....	16



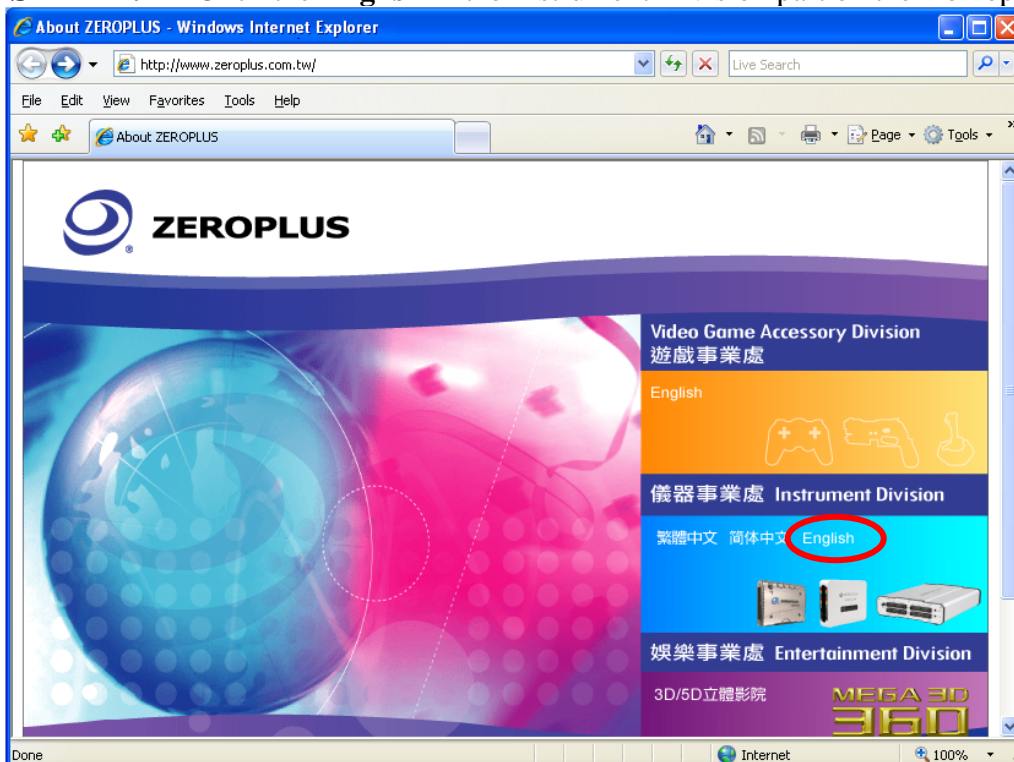
1. Software Download

Please install the software as the following steps:

Remark: We won't have additional notice for you, when there is any modification of the module specification. If there is some unconformity caused by the module version upgrade, users should take the module software as the standard.

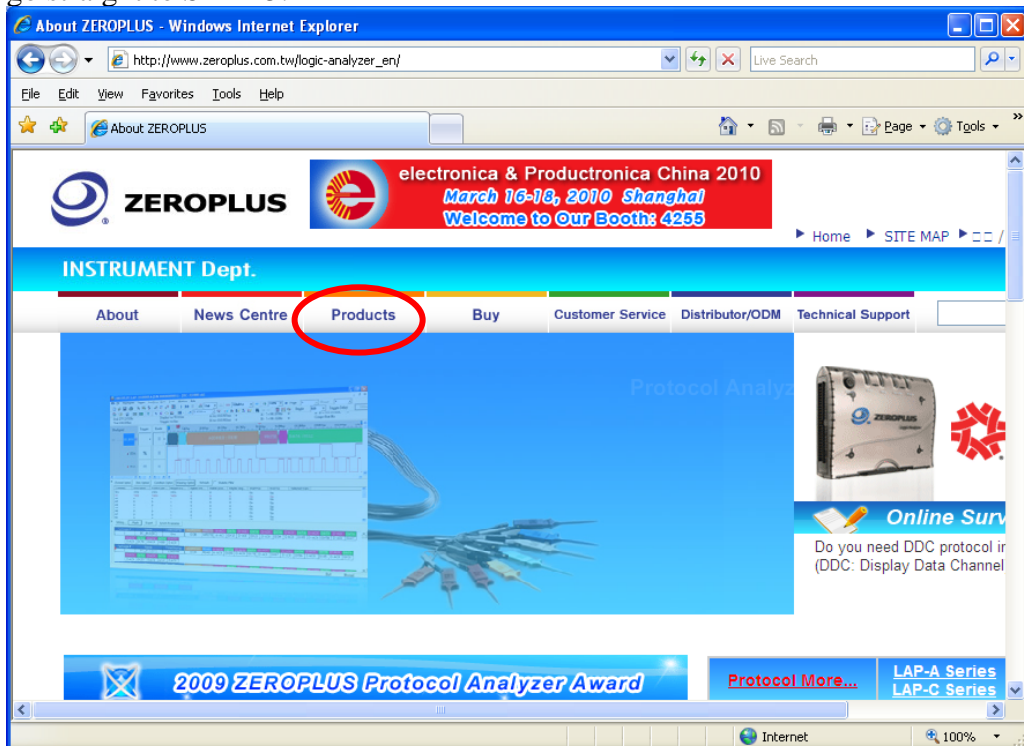
STEP 1. Visit the website of ZeroPlus: <http://www.zeroplus.com.tw>.

STEP 2. Click the **English** in the Instrument Division part on the Homepage.

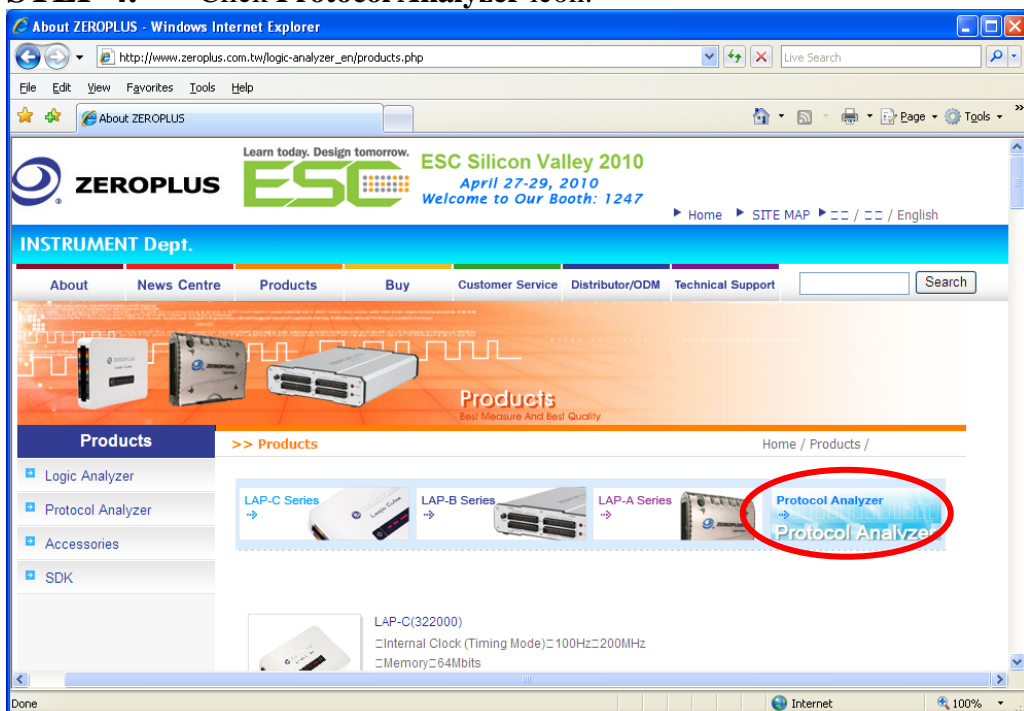




STEP 3. Click **Products** menu or select **Protocol Analyzer** item from its pull-down menu to go straight to STEP 5.

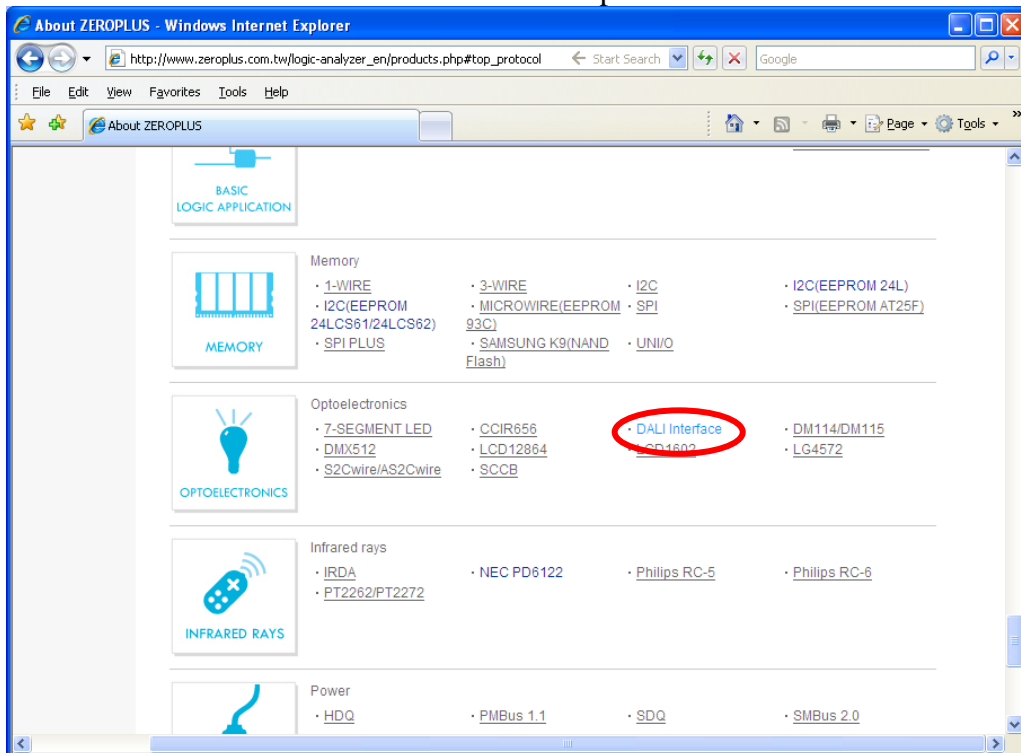


STEP 4. Click **Protocol Analyzer** icon.

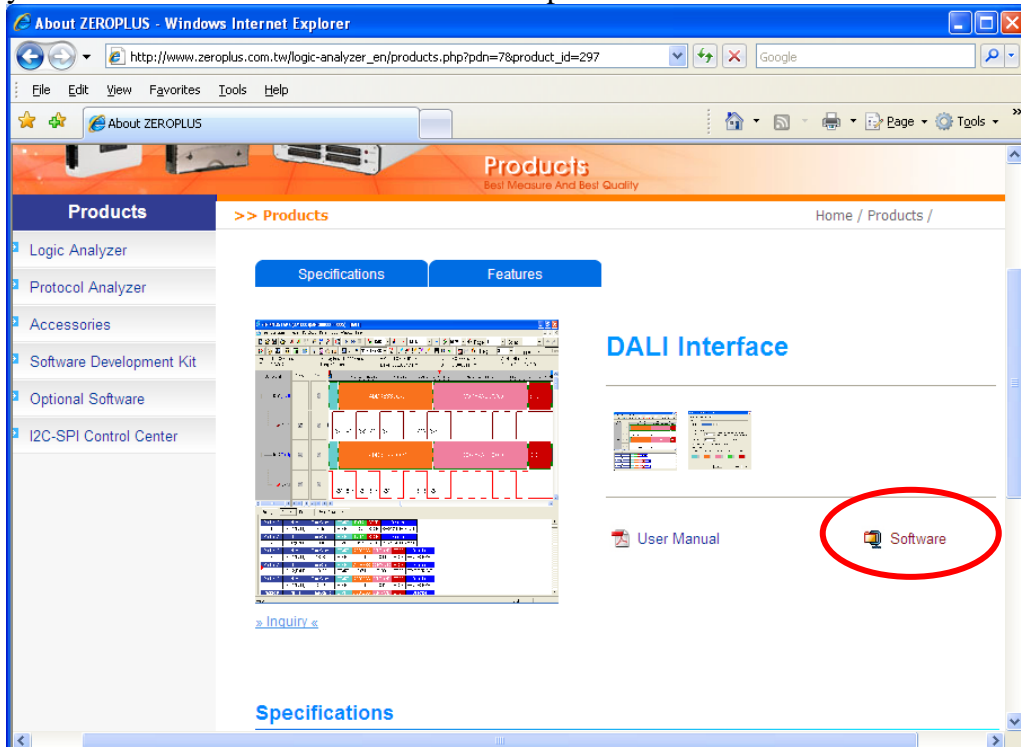




STEP 5. Click **DALI Interface** in the Optoelectronics.



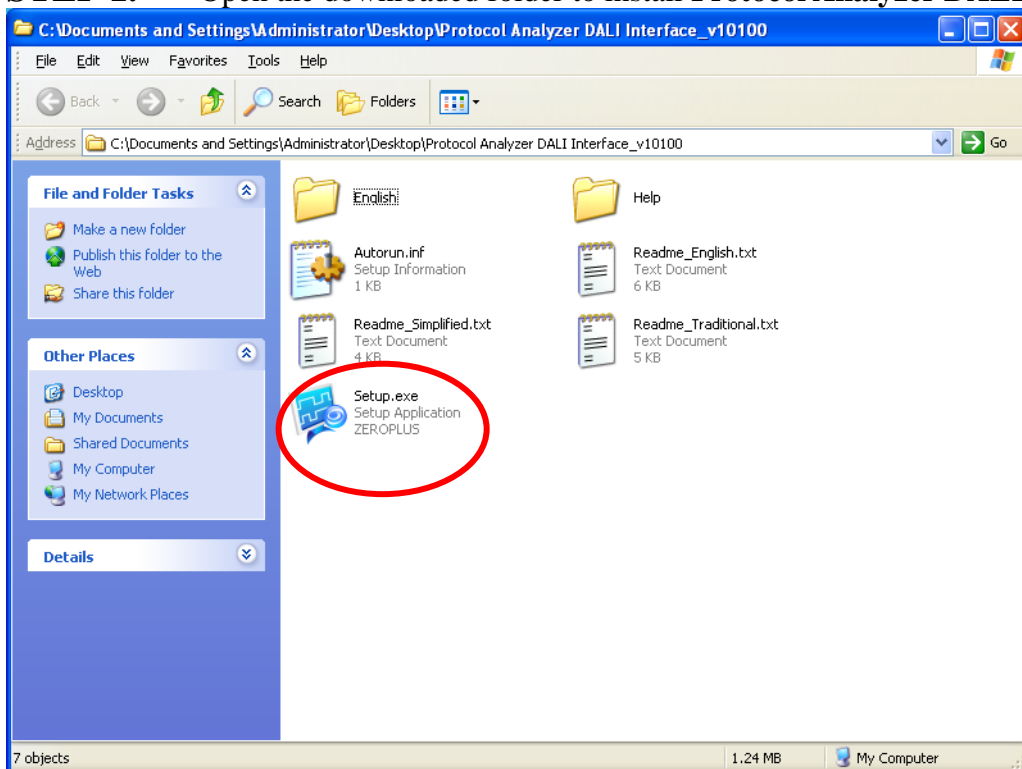
STEP 6. Click **Software** in the Products page. When the File Download dialog box appears, you can click **Save** button to save the compressed files.



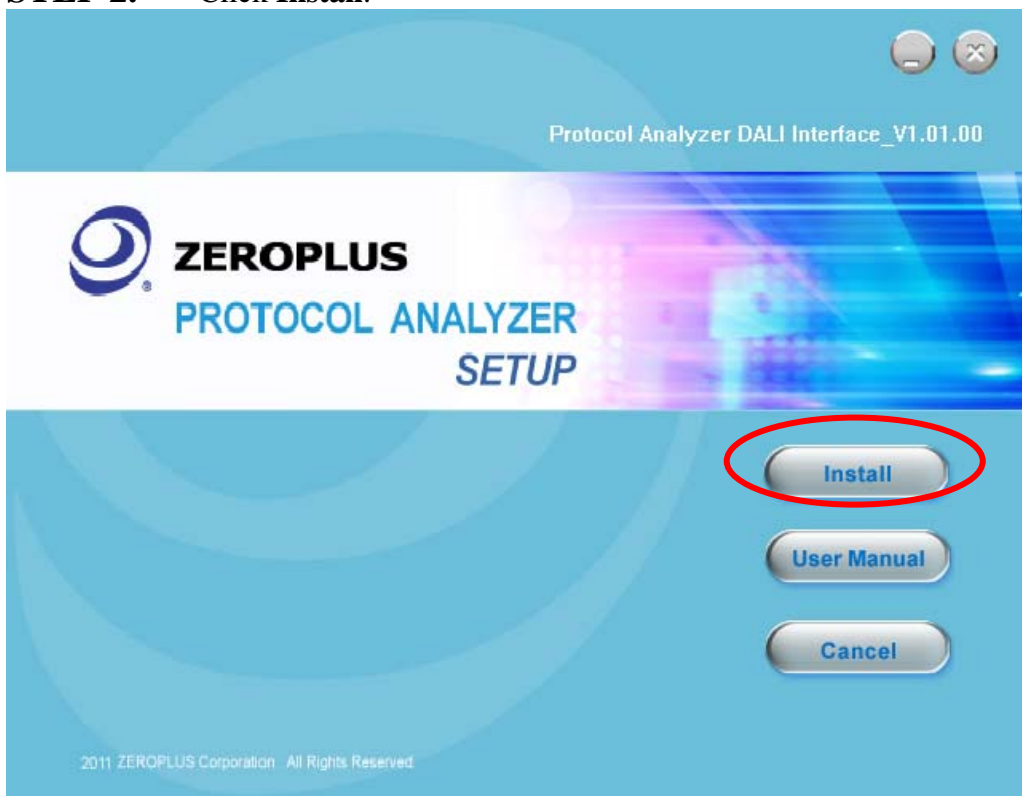


2. Software Installation

STEP 1. Open the downloaded folder to install **Protocol Analyzer DALI Interface**.

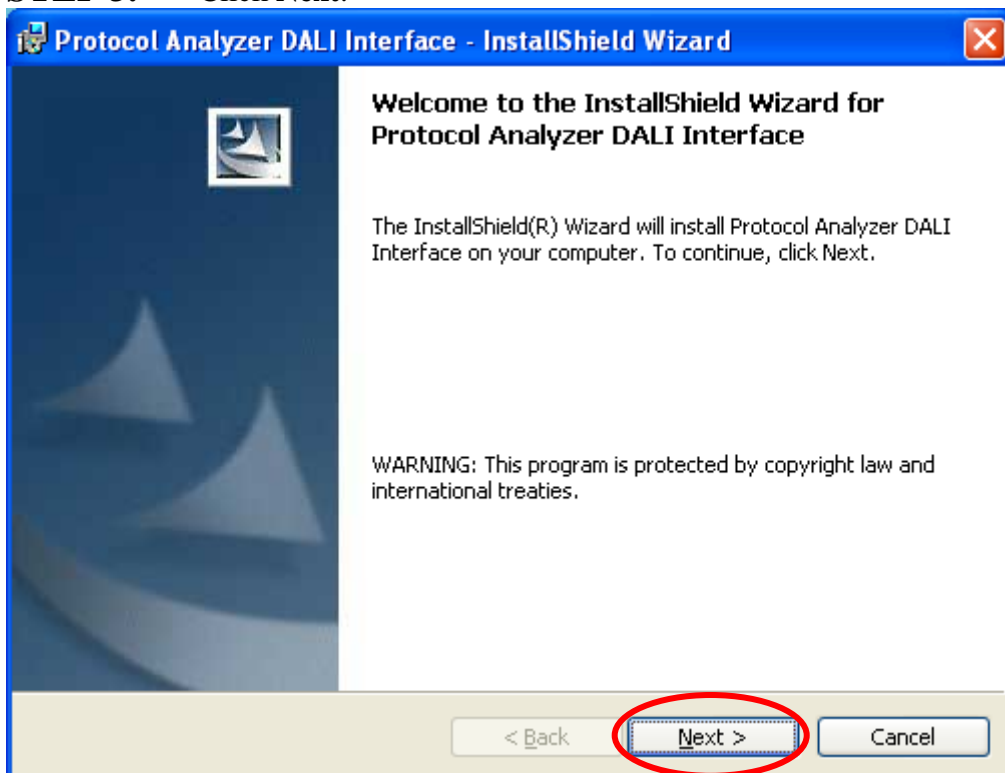


STEP 2. Click **Install**.

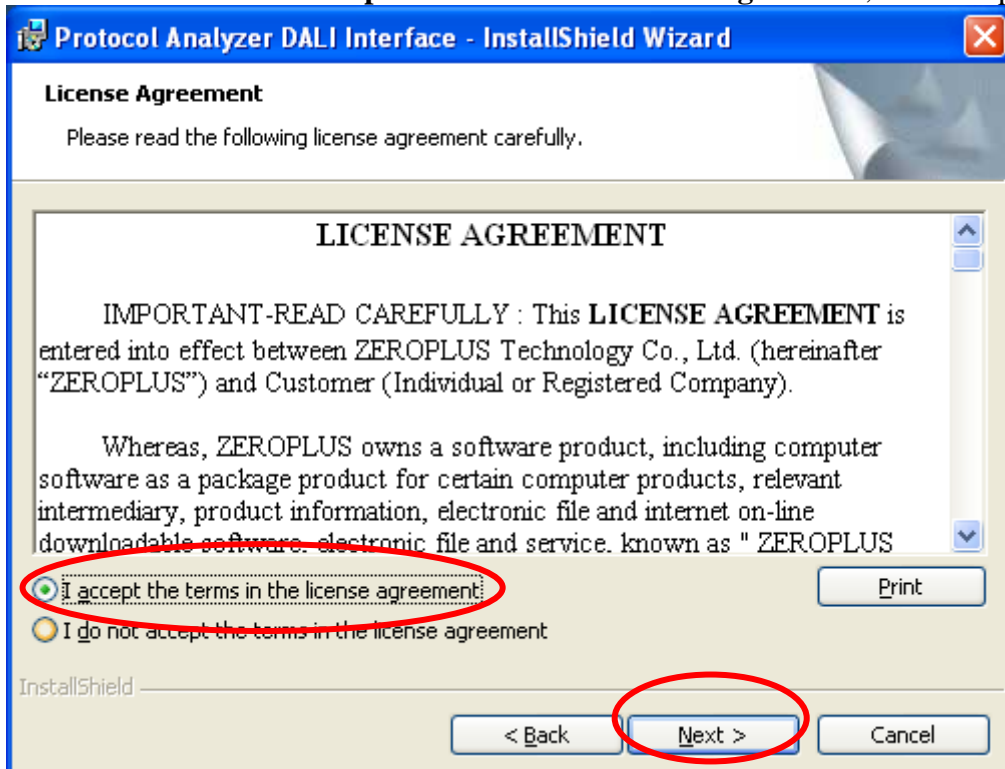




STEP 3. Click Next.



STEP 4. Select **I accept the terms in the license agreement**, and then press Next.





STEP 5. Fill in users' information in the below dialog box and click **Next**.

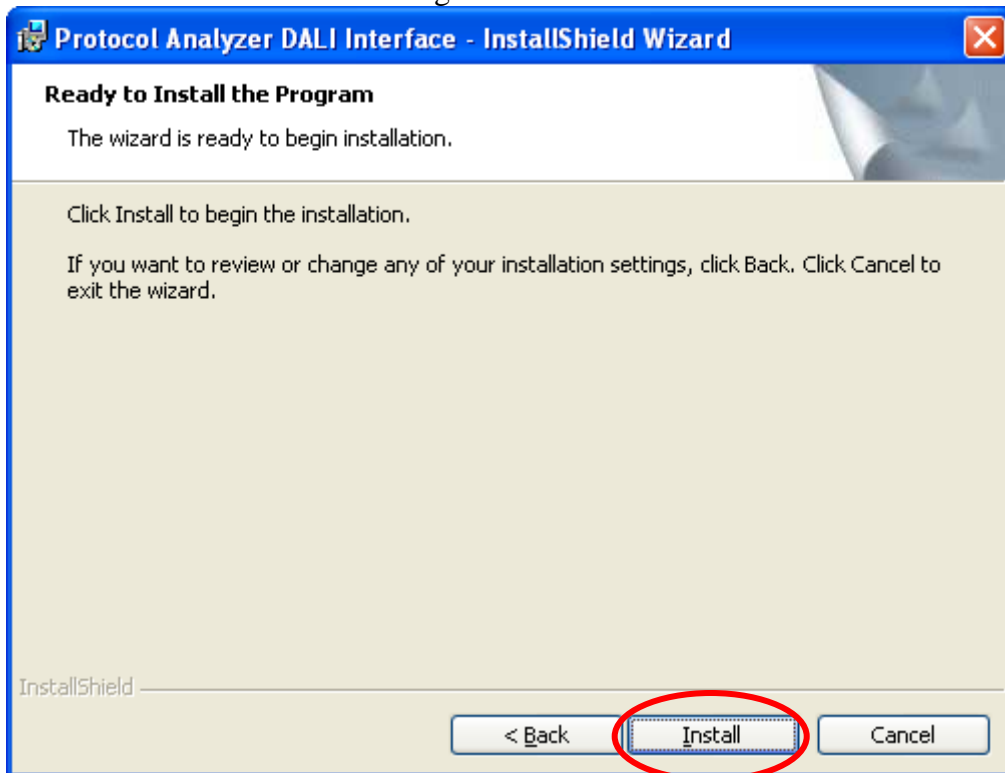
The dialog box is titled "Protocol Analyzer DALI Interface - InstallShield Wizard". It contains a section titled "Customer Information" with the instruction "Please enter your information." Below this are two text input fields: "User Name:" with the text "Microsoft" and "Organization:" with the text "User". There are two radio button options under the heading "Install this application for:": "Anyone who uses this computer (all users)" (selected) and "Only for me (Microsoft)". At the bottom, there are three buttons: "< Back", "Next >" (circled in red), and "Cancel".

STEP 6. Select **Complete** and then click **Next**.

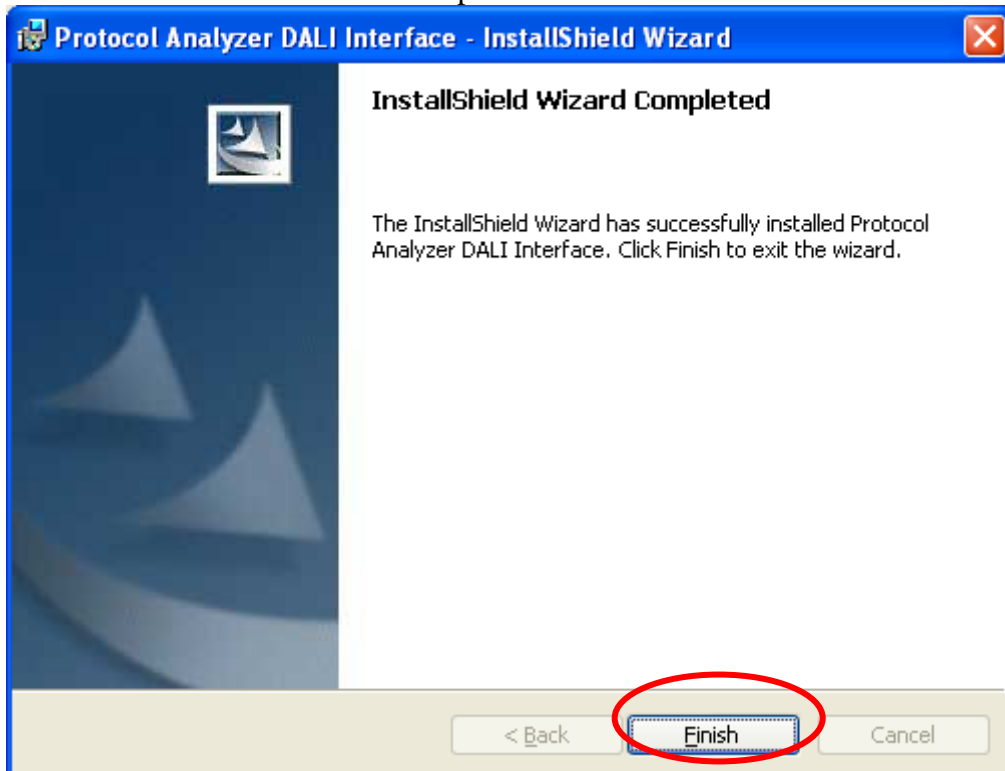
The dialog box is titled "Protocol Analyzer DALI Interface - InstallShield Wizard". It contains a section titled "Setup Type" with the instruction "Choose the setup type that best suits your needs." Below this is the text "Please select a setup type." There are two radio button options: "Complete" (selected) and "Custom". The "Complete" option has a description: "All program features will be installed. (Requires the most disk space.)". The "Custom" option has a description: "Choose which program features you want installed and where they will be installed. Recommended for advanced users." At the bottom, there are three buttons: "< Back", "Next >" (circled in red), and "Cancel".



STEP 7. Click **Install** to begin the installation.



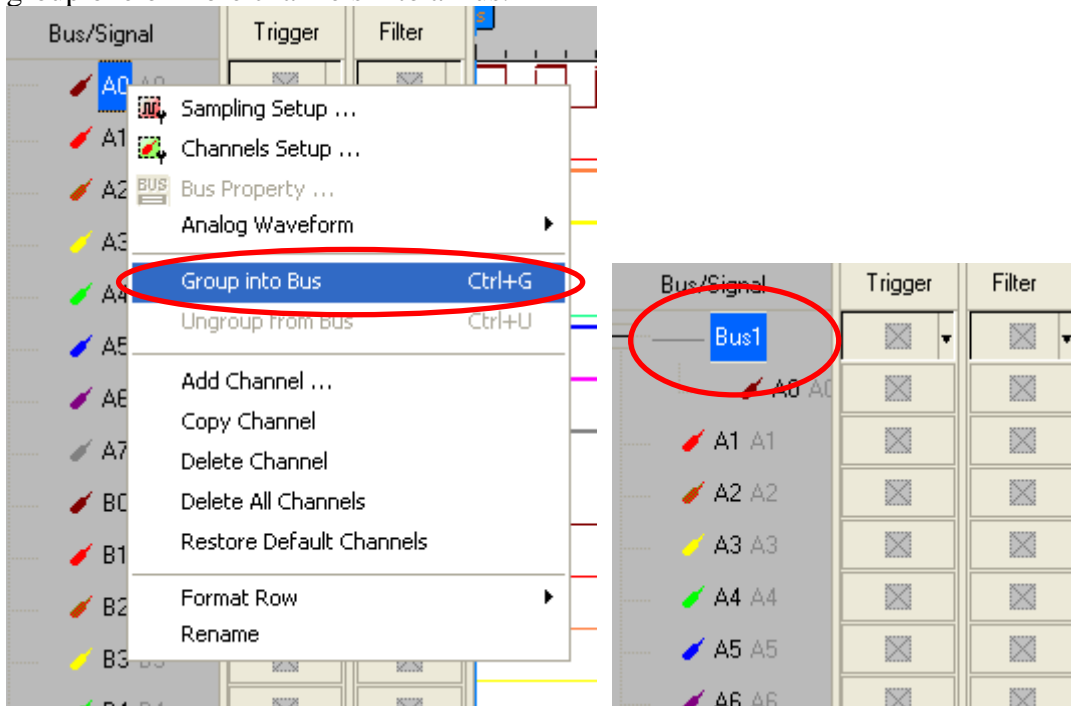
STEP 8. Click **Finish** to complete the installation.



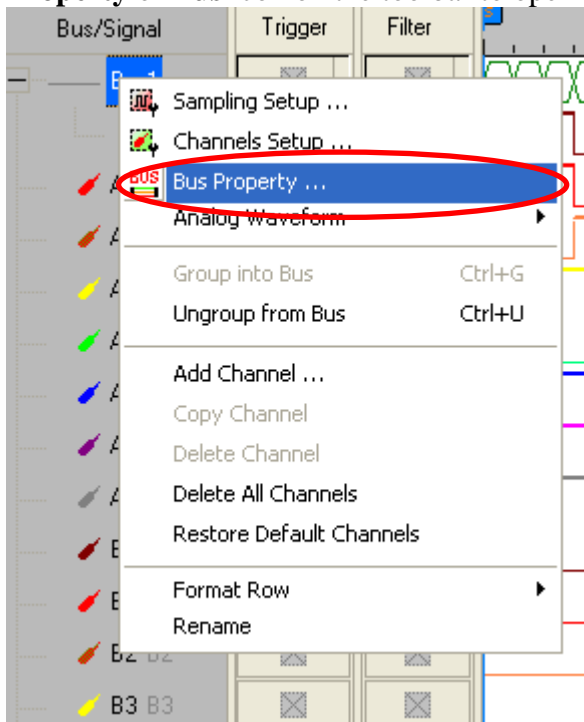


3. Software Register

STEP 1. Open the Logic Analyzer and group the unanalyzed channels into **Bus1** by pressing the **Right Key** on the mouse. **DALI Interface** needs one channel to decode signals, so it is necessary to group one or more channels into a Bus.

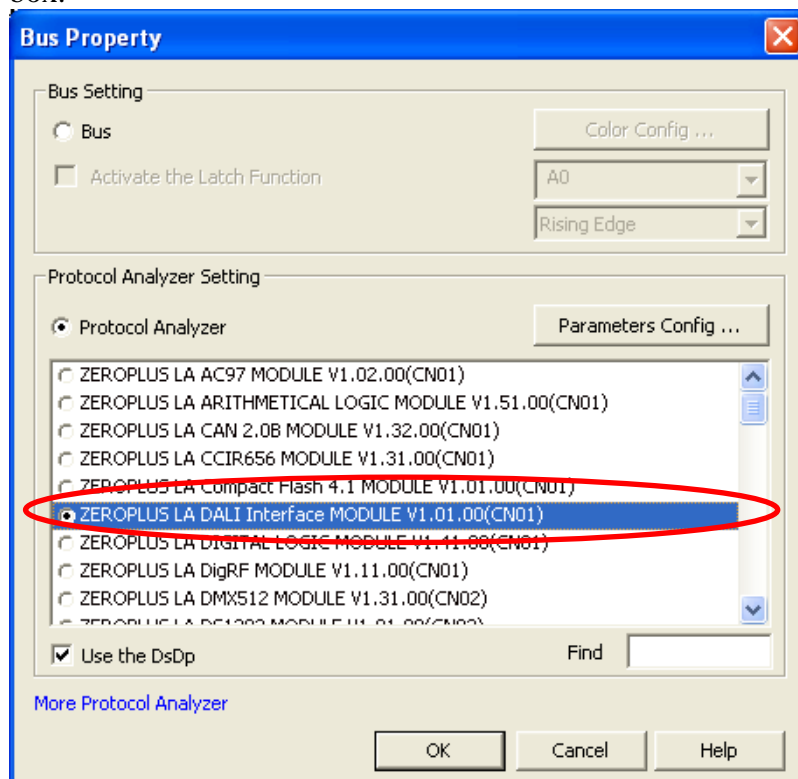


STEP 2. Select **Bus1**, and press **Right Key** on the mouse to list the menu, then press **Bus Property** or **Bus** icon on the toolbar to open **Bus Property** dialog box.

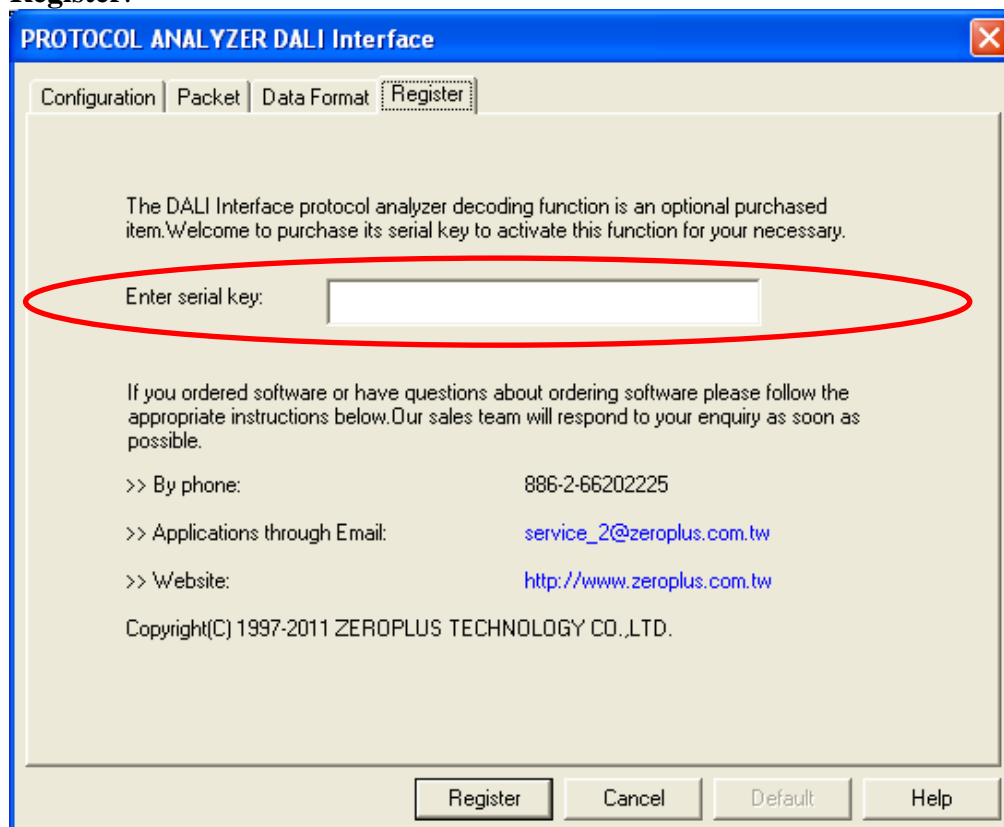




STEP 3. For Protocol Analyzer DALI Interface Parameters Configuration, select Protocol Analyzer, and then choose **ZEROPLUS LA DALI Interface MODULE V1.01.00(CN01)**. Next click **Parameters Configuration** to open the **PROTOCOL ANALYZER DALI Interface** dialog box.

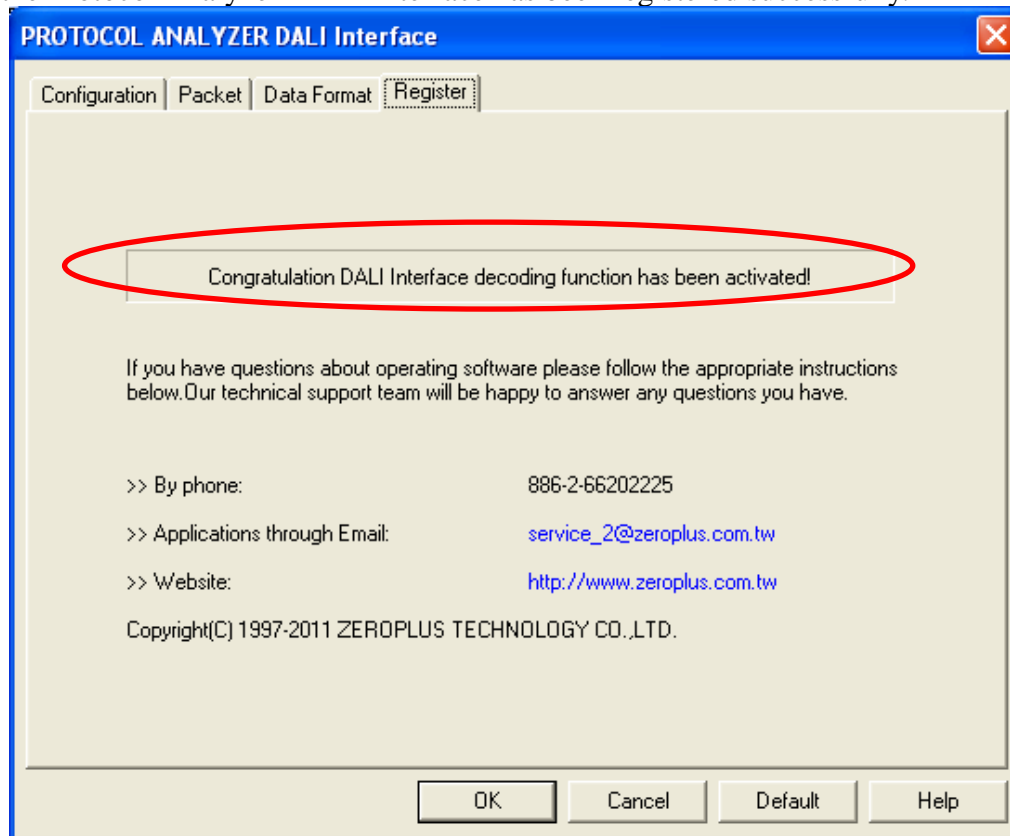


STEP 4. Press the Register tab to enter the serial key of the **DALI Interface**. Then, press **Register**.





STEP 5. After pressing the Register button, the following dialog box will appear; it denotes that the Protocol Analyzer DALI Interface has been registered successfully.

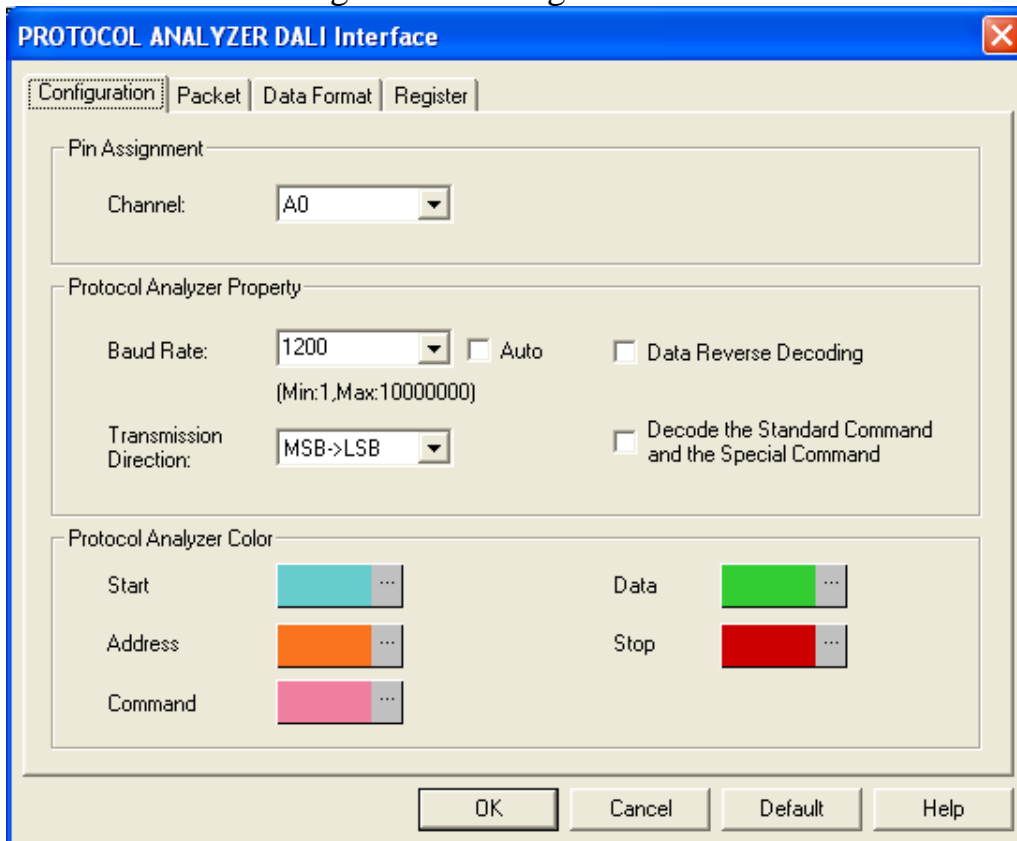




4. User Interface

In the configuration, please refer to the below images to select options of setting DALI Interface module.

DALI Interface Configuration Dialog Box



Pin Assignment:

DALI Interface: It is the Data Transmission Channel.

Protocol Analyzer Property:

Baud Rate: Users can set it in the range from 1 to 10000000 as their requirements or select the value (1200, 2400, 4800, 9600, 19200, 38400, 57600, 115200, 230400, 460800 and 921600) from the pull-down menu, and the default is 1200.

Auto: When the option is selected, the baud rate will be judged automatically, and it is available when the error is small.

Transmission Direction: Set the Direction to MSB->LSB or LSB->MSB.

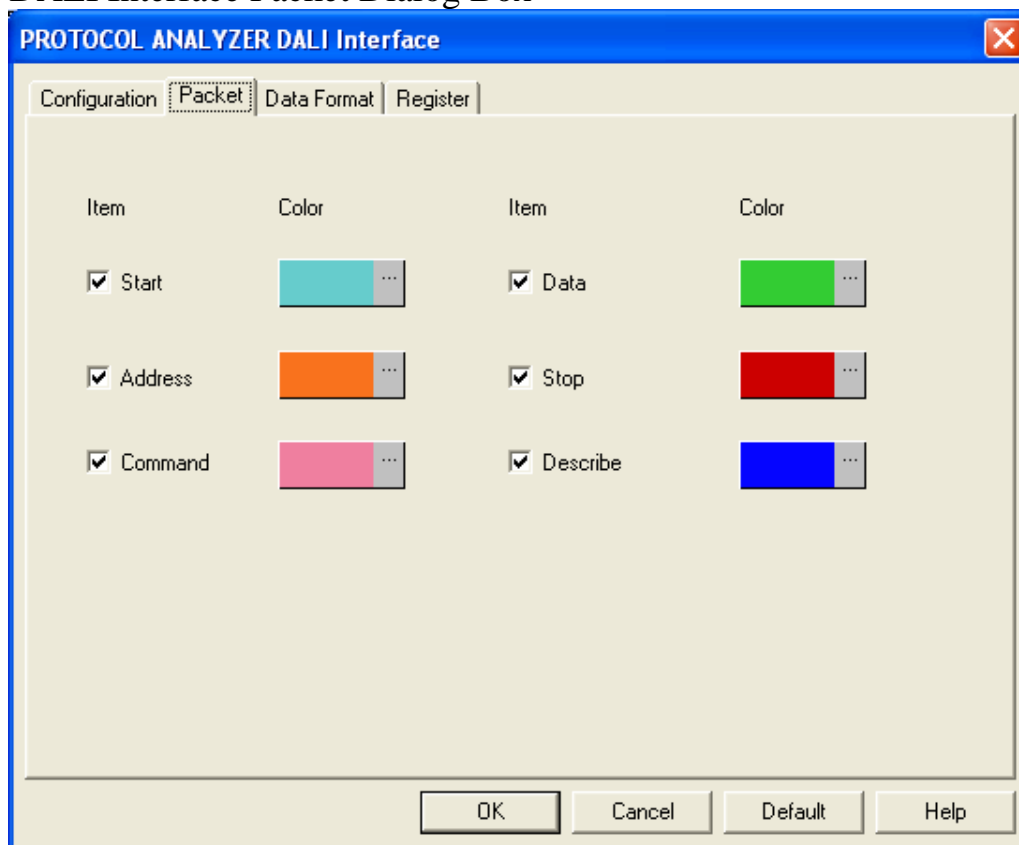
Data Reverse Decoding: The Protocol Analyzer DALI Interface uses two wires to transmit the data. When it is decoded, one wire is enough, so the other wire is used as the Data Reverse Decoding.

Decode the Standard Command and the Special Command: It can be switched between decoding the specific Command and not decoding the specific Command. That is to say, if the option is not selected, the specific Command will not be decoded.

Protocol Analyzer Color: The Protocol Analyzer Color can be varied by users.

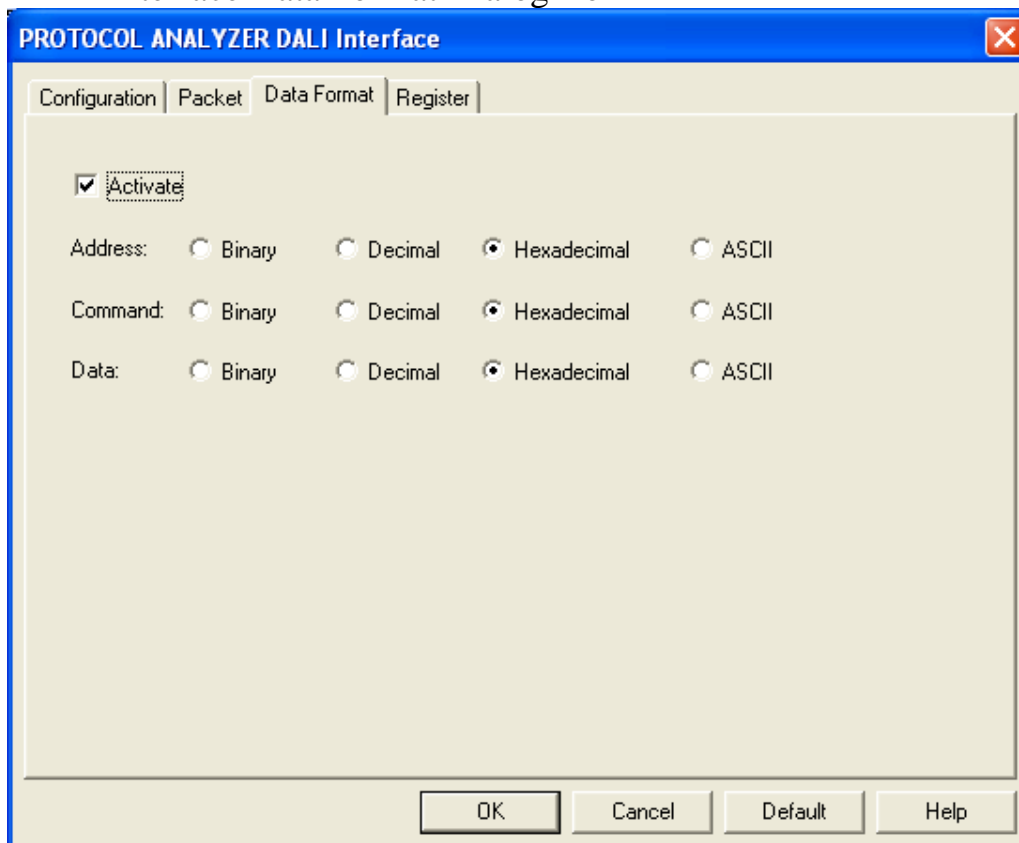


DALI Interface Packet Dialog Box



In the Packet dialog box, users can vary the color of items and set the item to be displayed.

DALI Interface Data Format Dialog Box

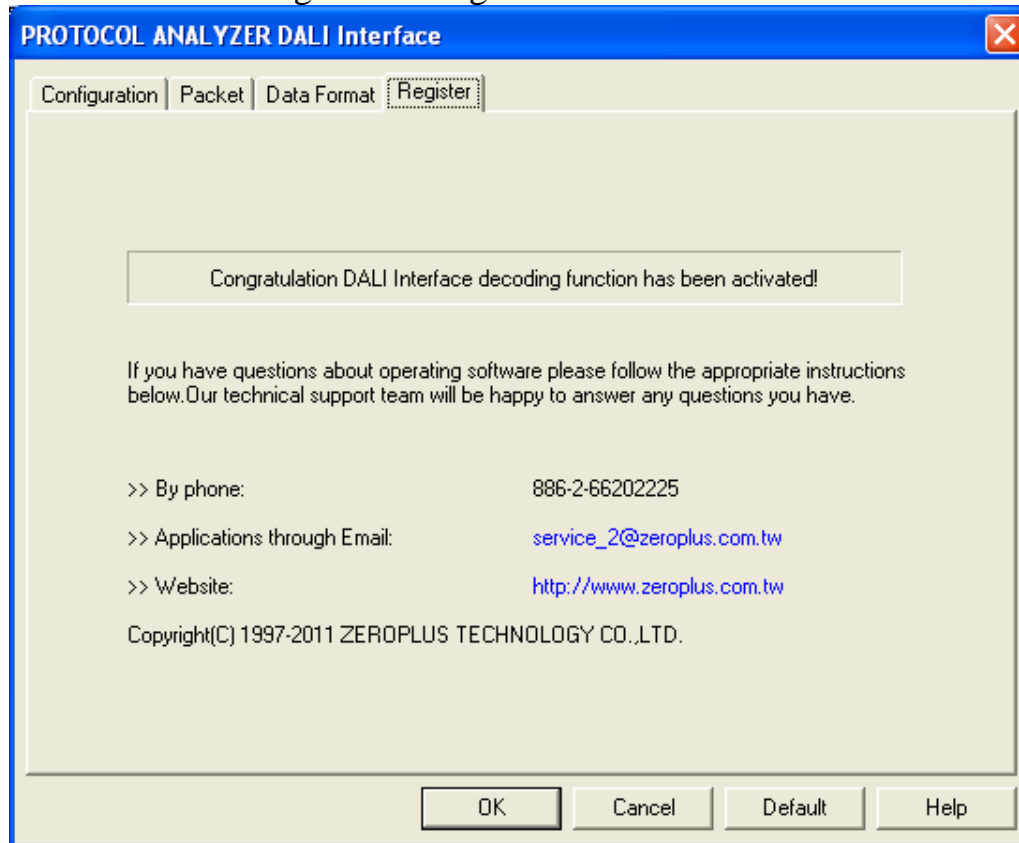


Users can set the Data Format of the Address, Command and Data as their requirements. When



selecting the option, Activate, the data format is decided by the settings in the Protocol Analyzer; when not selecting the option, Activate, the data format is decided by the settings in the main program.

DALI Interface Register Dialog Box

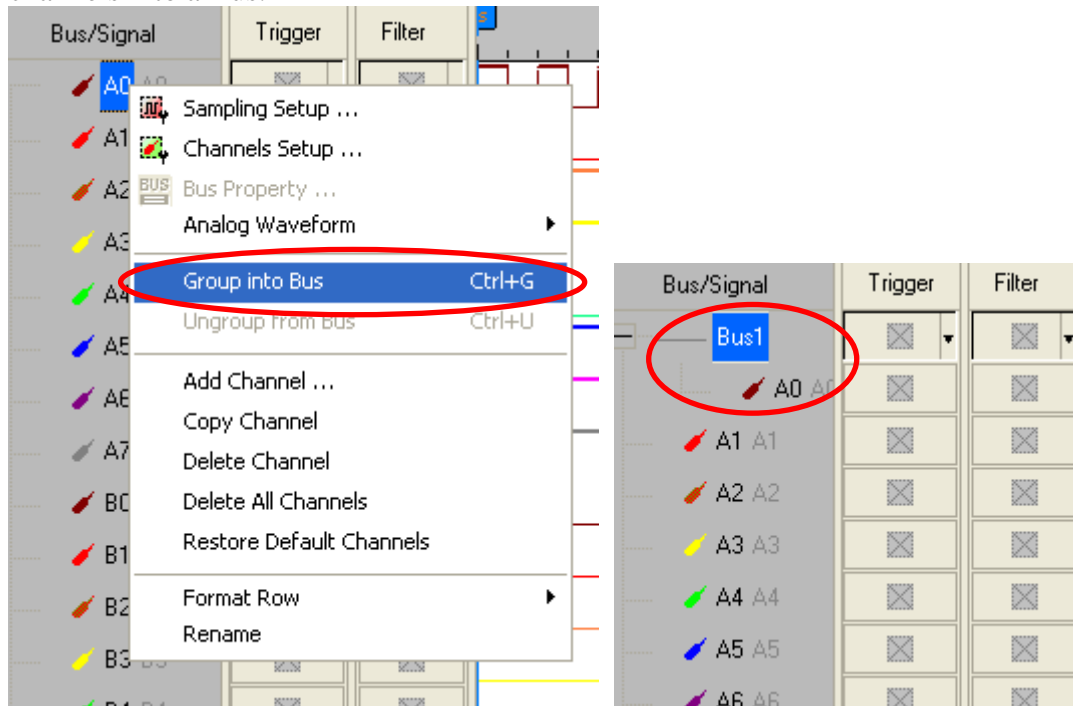


There is written ZeroPlus company information. If you have any questions about software operations, you can contact ZeroPlus by Telephone or Email.

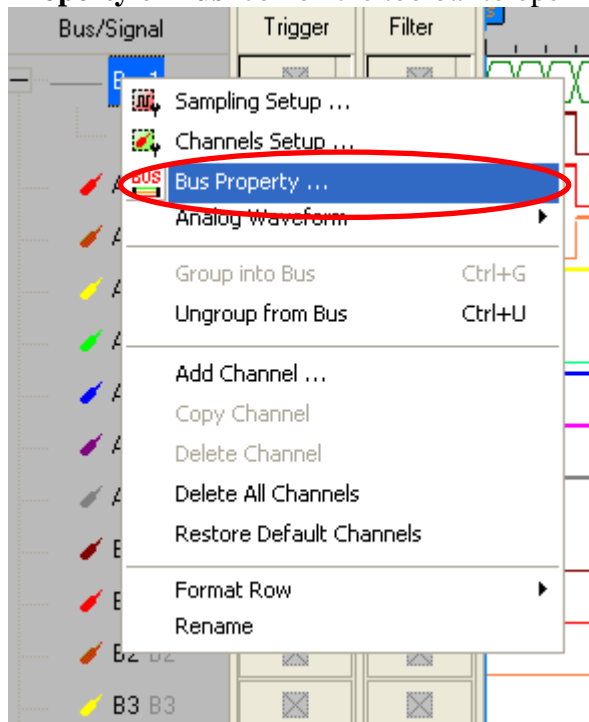


5. Operating Instructions

STEP 1. Group the unanalyzed channels into **Bus1** by pressing the **Right Key** on the mouse. **DALI Interface** needs one channel to decode signals, so it is necessary to group one or more channels into a Bus.

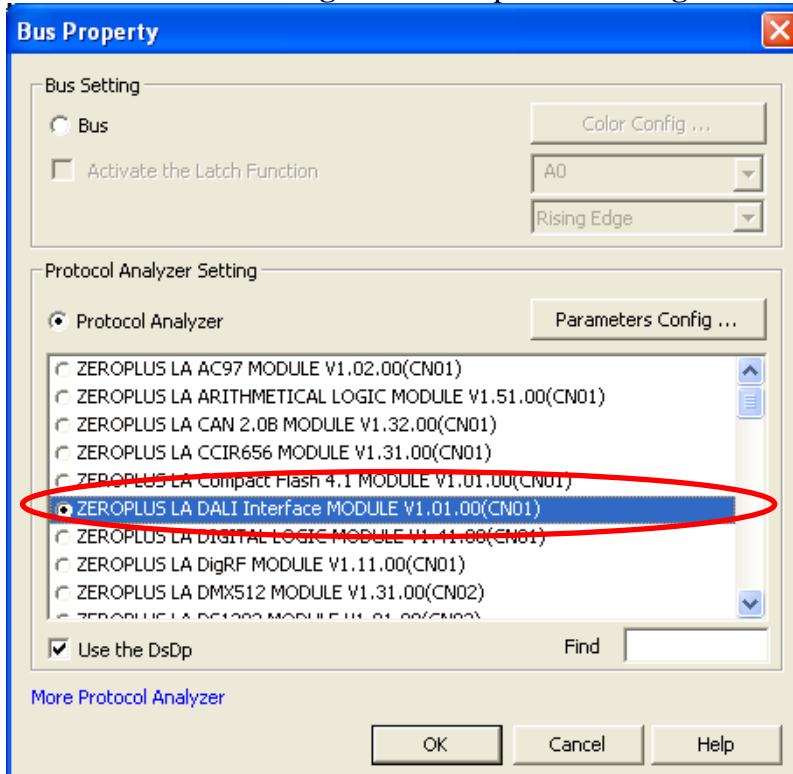


STEP 2. Select **Bus1**, and press **Right Key** on the mouse to list the menu, then press **Bus Property** or **Bus** icon on the toolbar to open **Bus Property** dialog box.

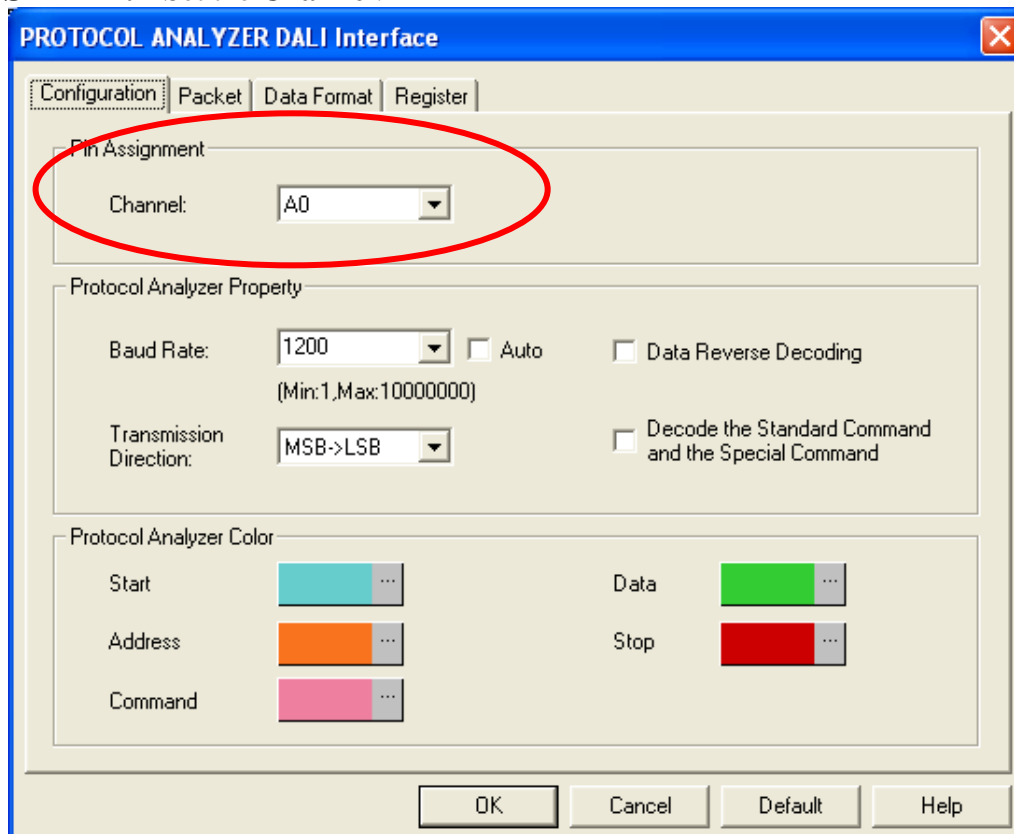




STEP 3. For Protocol Analyzer DALI Interface Parameters Configuration, select Protocol Analyzer, and then choose **ZEROPLUS LA DALI Interface MODULE V1.01.00(CN01)**. Next click **Parameters Configuration** to open the **Configuration** dialog box.



STEP 4. Set the **Channel**.





STEP 5. Set the Protocol Analyzer Property.

The screenshot shows the 'PROTOCOL ANALYZER DALI Interface' window. The 'Configuration' tab is selected. The 'Pin Assignment' section shows 'Channel' set to 'A0'. The 'Protocol Analyzer Property' section is highlighted with a red oval and contains the following settings: 'Baud Rate' is set to '1200' (with a range of Min:1, Max:10000000) and 'Auto' is unchecked; 'Data Reverse Decoding' is checked; 'Transmission Direction' is set to 'MSB->LSB'; and 'Decode the Standard Command and the Special Command' is checked. The 'Protocol Analyzer Color' section shows color swatches for Start (cyan), Address (orange), Command (pink), Data (green), and Stop (red). At the bottom are buttons for 'OK', 'Cancel', 'Default', and 'Help'.

STEP 6. Set the Protocol Analyzer Color.

This screenshot is identical to the one in Step 5, showing the same 'PROTOCOL ANALYZER DALI Interface' window with the same settings. However, the 'Protocol Analyzer Color' section is highlighted with a red oval, indicating the focus of this step. The color swatches for Start, Address, Command, Data, and Stop are visible, each with a small '...' button next to it for selection.

Protocol Analyzer Decoding

